

Number Farm

TEACHER PACKAGE

Thank you for booking a Teacher's Pet In-School Field Trip!



In this package, you will find some key documents that will help you prepare for your upcoming fieldtrip. This package includes:

- ✓ Field Trip Form
- ✓ Checklist Letter
- ✓ Learning outcomes that will be explored during the fieldtrip
- ✓ Information Sheets about payments and volunteers

★ Please use the Checklist Letter as your guide as you prepare your classroom for our visit.

Please note that all documents are copyrighted and any reproduction or distribution of these documents electronically or otherwise, in whole or in part, is strictly prohibited except for the purposes of this singular scheduled fieldtrip.

If you have any questions, please feel free to contact us at

- ★ 780 434 8224
- ★ 1-888-634-8738 for Calgary
- ★ Email: fieldtrips@tpet.ca

We are looking forward to visiting your classroom and engaging your students in an energetic and interactive learning experience!

Best wishes,

The Teacher's Pet Team



No bus needed!

We come to your classroom!

Number Farm

FOR YOUR INFORMATION

Payments

Please note our Payment Policy:



1. You will be invoiced once the field trip has taken place. This invoice will be emailed to you. Kindly forward the invoice to your office for payment.
2. Payments may be by cheque or credit card.
3. If paying by cheque, please make the cheque out to **Teacher's Pet Educational Services** and mail to:
Teacher's Pet Educational Services
11215-180 Street
Edmonton, AB
T5S 0B4
4. If paying by credit card, please call the office at:
780 434 8224 (Edmonton)
1 888 634 8738

Please note: We are an approved vendor in your school district.

Volunteers

Volunteers are an integral part of your classroom and during this field trip. On your checklist letter and on the field trip form, you will find a suggested number of volunteers that are needed for this event. Please be aware that there may be components of this field trip where volunteers will need to read English. If this is difficult for some of your volunteers, we will try to place them at stations with little or no reading but this is not always possible.



Student Booklets



Teacher's Pet is going green! We are committed to helping the environment in accordance with green initiatives undertaken within schools. We are currently in the process of reducing the length of or eliminating the student booklets that have been used in our field trips. We understand that photocopying costs are steep and excess paper usage is not good for the environment.

As change takes time, some of our field trips will still have a reproducible student booklet this year. We thank you for your patience during this time of transition.

Number Farm

IN-SCHOOL FIELD TRIP FORM

A Teacher's Pet Educational Services In-School Field Trip is visiting our classroom! Our students will have an opportunity to participate in interactive stations while learning several key components of the curriculum.

Here is brief outline of our learning adventure!

Number Farm

Students count, sort and pattern everything from blue cows and green chickens to flowers and pitch forks. Songs, movement, stories and an engaging poster activity will show students that math helps everything make sense!



Date of presentation: _____ Time of presentation: _____

Cost: _____ Please return your payment for this event by _____

✂ -----

I hereby give my son/daughter _____ permission to participate in the Number Farm In-School Fieldtrip on _____ at _____ AM/PM.

Date: _____ Signature: _____

Amount enclosed: _____

In order for your child to receive the maximum benefit from this field trip, we will require 4-5 volunteers to help out in station activities. Please arrive at least 15 minutes before the scheduled field trip time to receive instructions.

☐ I will be able to volunteer.

Name/phone number: _____

☐ I am sorry, but I will not be able to volunteer.



Number Farm

CHECKLIST

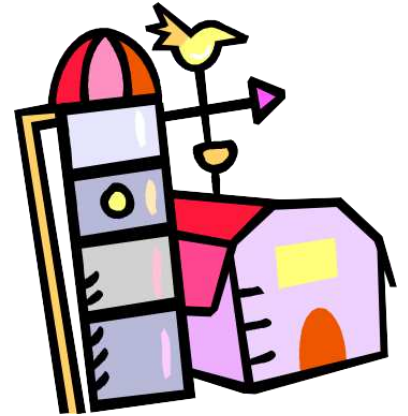
The following is a checklist to help you prepare for this exciting event. We kindly recommend that this checklist is followed to ensure a smooth and productive field trip.

Before the field trip:

- ☐ If it is your policy to send home a field trip form letter for in-school field trips, you are welcome to use the one included in this package. It has been provided for your convenience!
- ☐ 4-5 volunteers are required and they should arrive at least 15 minutes prior to the beginning of the field trip.
- ☐ Please prepare name tags for your students.

Day of the field trip:

- ☐ Please organize your classroom in the following way:
 - Please have 4-5 “station” areas. These can be tables or desks pushed together. The students will be using this area to work on their posters.
 - Please have an open area (carpet area) available for movement and story activities.
- ☐ To help keep nasty germs at bay, please have your students wash their hands BEFORE the field trip. 😊
- ☐ Please provide each student with a name tag.
- ☐ The Teacher’s Pet representative will arrive approximately 20-30 minutes prior to the scheduled field trip to set up stations and talk to parent volunteers.



During the field trip:

- ☐ Students will participate in a variety of songs, movement activities, games and will create a barnyard poster that demonstrates their ability to sort, pattern and count!
- ☐ The Teacher’s Pet representative does not replace the classroom teacher. It is beneficial for the classroom teacher to roam freely to provide positive reinforcement and troubleshoot. This is a great opportunity to monitor and assess your students’ learning!
- ☐ Since students are quite involved during the field trip, it is necessary for them to stay in for recess.

After the field trip:

- ☐ Please fill out the online evaluation form found at <https://tpet.wufoo.com/forms/r7x3a7/> . Your input is very valuable and very much appreciated!

Payment:

- ☐ Please refer to the Payment section included on the “For Your Information...” page for detailed information about our Payment Policy.

Please contact us if you have any questions or comments. Thank you for allowing us the privilege of visiting your classroom!

Best wishes,

The Teacher’s Pet Team

Number Farm

LEARNER OUTCOMES

The following **Learner Outcomes** are explored to varying degrees within the 1.5 hour Kindergarten In-School Field Trip, Number Farm.

NUMBER

General Outcome

Number sense

Specific Outcome

1. Say the number sequence 1 to 10 by 1's, starting anywhere from 1 to 10 and 10 to 1. [C, CN, V]
2. Subitize (recognize at a glance) and name familiar arrangements of 1 to 5 objects or dots. [C, CN, ME, V]
3. Relate a numeral, 1 to 10, to its respective quantity. [CN, R, V]
4. Represent and describe numbers 2 to 10, concretely and pictorially. [C, CN, ME, R, V]



PATTERNS AND RELATIONS (Patterns)

General Outcome

Use patterns to describe the world and to solve problems

Specific Outcome

1. Demonstrate an understanding of repeating patterns (two or three elements) by:
 - identifying
 - reproducing
 - extending
 - creatingpatterns using manipulatives, sounds and actions. [C, CN, PS, V]
2. Sort a set of objects based on a single attribute, and explain the sorting rule [C, CN, PS, R, V]



SHAPE AND SPACE (measurement)

General Outcome

Use Direct and indirect measurement to solve problems.

Specific Outcome

1. Use direct comparison to compare two objects based on a single attribute, such as length (height), mass (weight), and volume (capacity). [C, CN, PS, R, V]